

V I K H R O L I W E S T



L I V E T H E L U X U R Y

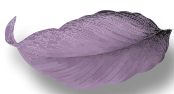
IF FLOWERS BE TO BEAUTY,
WHAT MUSIC IS TO MOOD,
PLAY ON...





Artist's impression.

MESMERISING LUXURY



THE PINNACLE OF ELITE LIVING



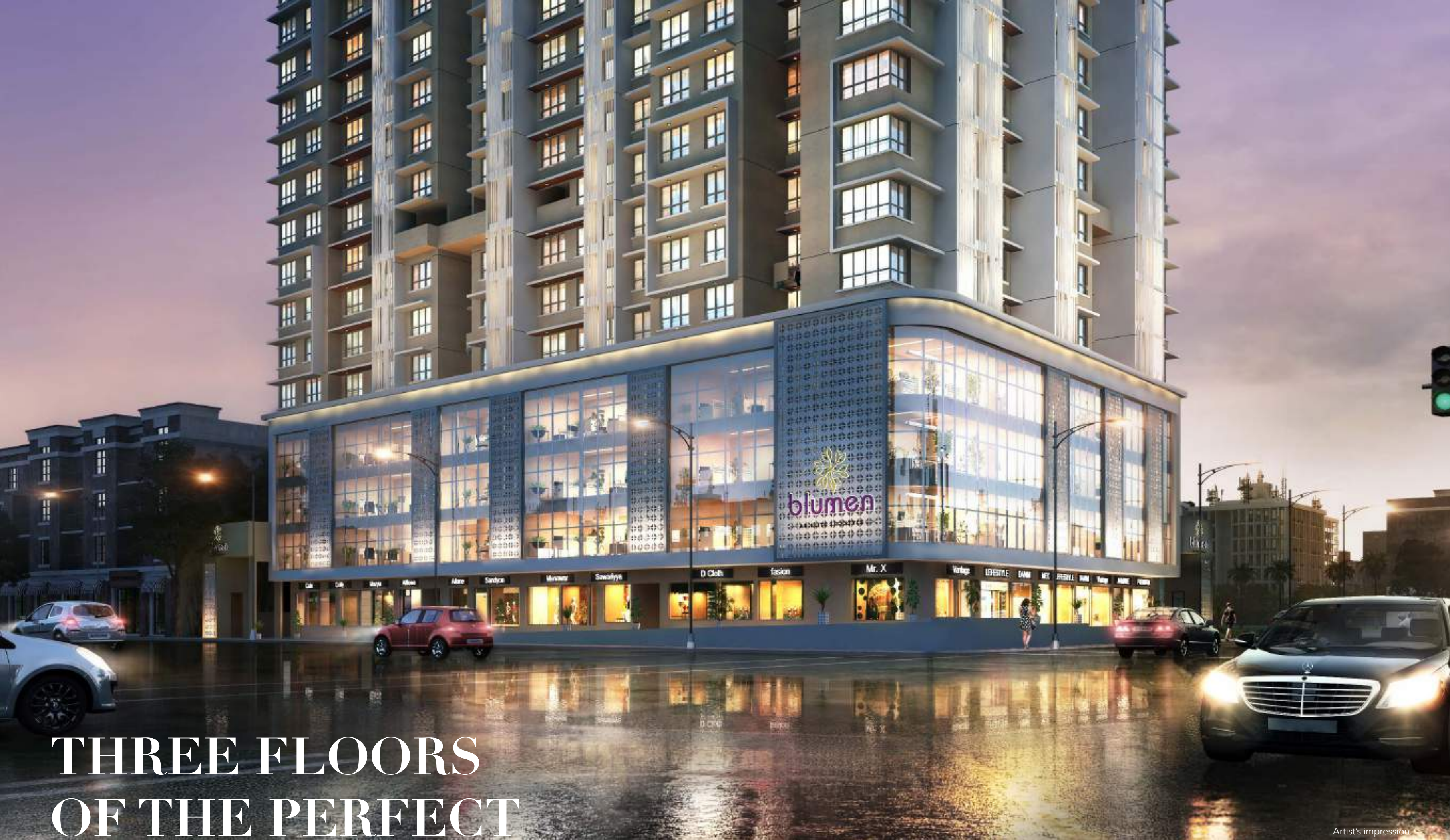
The miracle of a flower blooming changed our lives forever. Out of the sharpest of thorns, the finest of roses bloom. Some say a blooming flower is a smile from heaven. But all agree that happiness blooms from within. And when a flower blooms in adversity, it becomes the most rare and exotic. Precisely how, we have created this unique, realty and lifestyle bouquet.

Curated with an unmatched, aspirational fragrance that never goes out of style. Quite aptly, we have christened it - Blumen. Because a thing of beauty doesn't demand attention. It commands it.



DAZZLING VIEWS & GRANDEUR FROM DAWN TO DUSK





Artist's impression.

THREE FLOORS OF THE PERFECT WORK ENVIRONMENT

Carefully designed office spaces spanning three floors give you the freedom to conduct your business in the most conducive environment. You can select the office module and add on modules as per your space requirements. Sky is the limit!

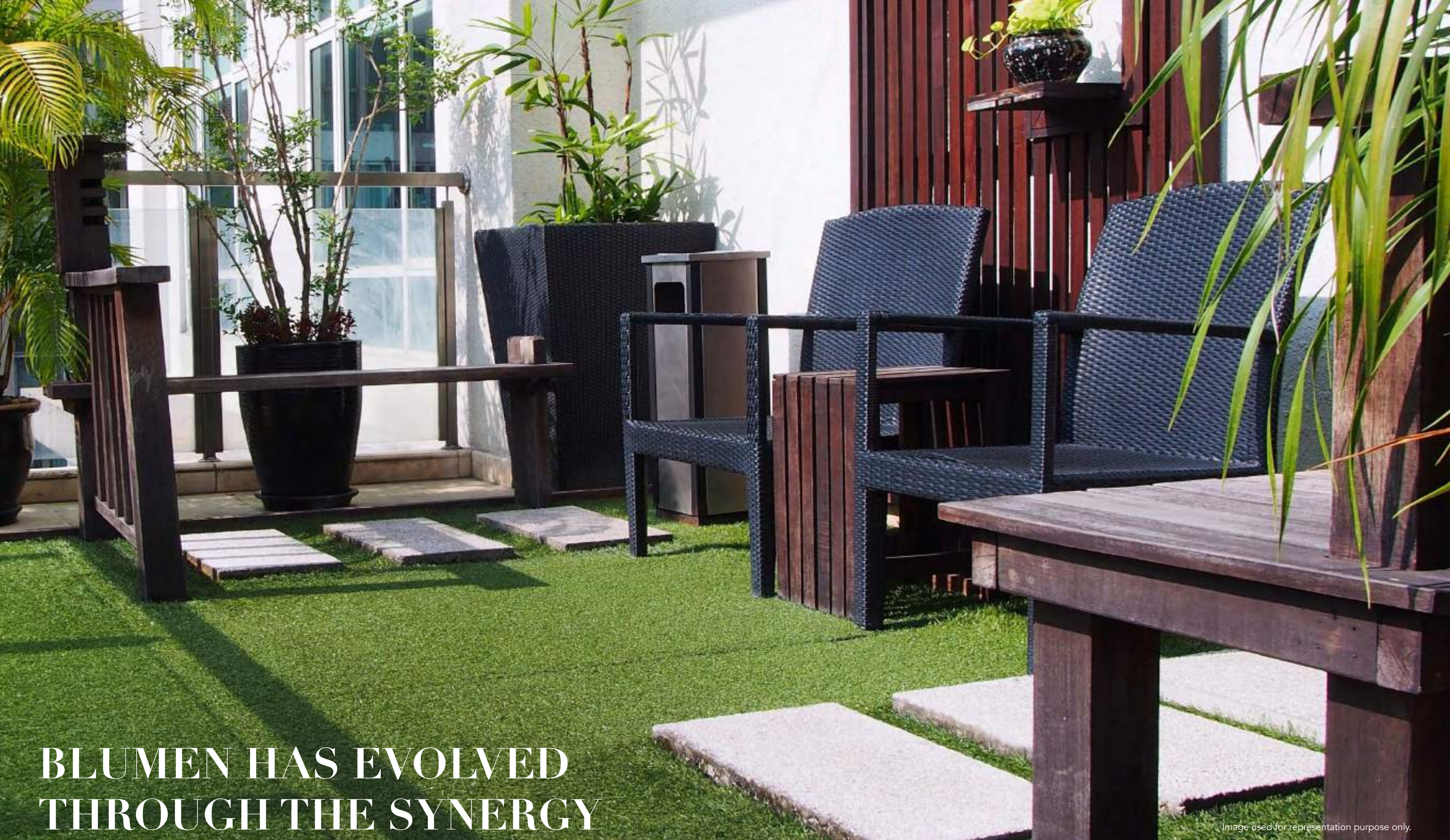
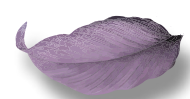


Image used for representation purpose only.

BLUMEN HAS EVOLVED THROUGH THE SYNERGY OF THREE DISCIPLINES



- 1) THE ART
- 2) THE SCIENCE
- 3) THE CRAFT

1) THE ART

A thing of beauty is a joy for ever. Blumen's architectural splendour showcases aesthetics in the-state-of-the-art design. In style and substance to defy the test of time.



Image used for representation purpose only.

2) THE SCIENCE



Image used for representation purpose only.

The best of engineering that delivers fast paced construction with optimum quality is the benchmark. Environment friendly operations, with trained and experienced technical skill force, ensure quality and reliability that's unmatched. Advanced scientific architectural design permeates into the making of Blumen.

3) THE CRAFT

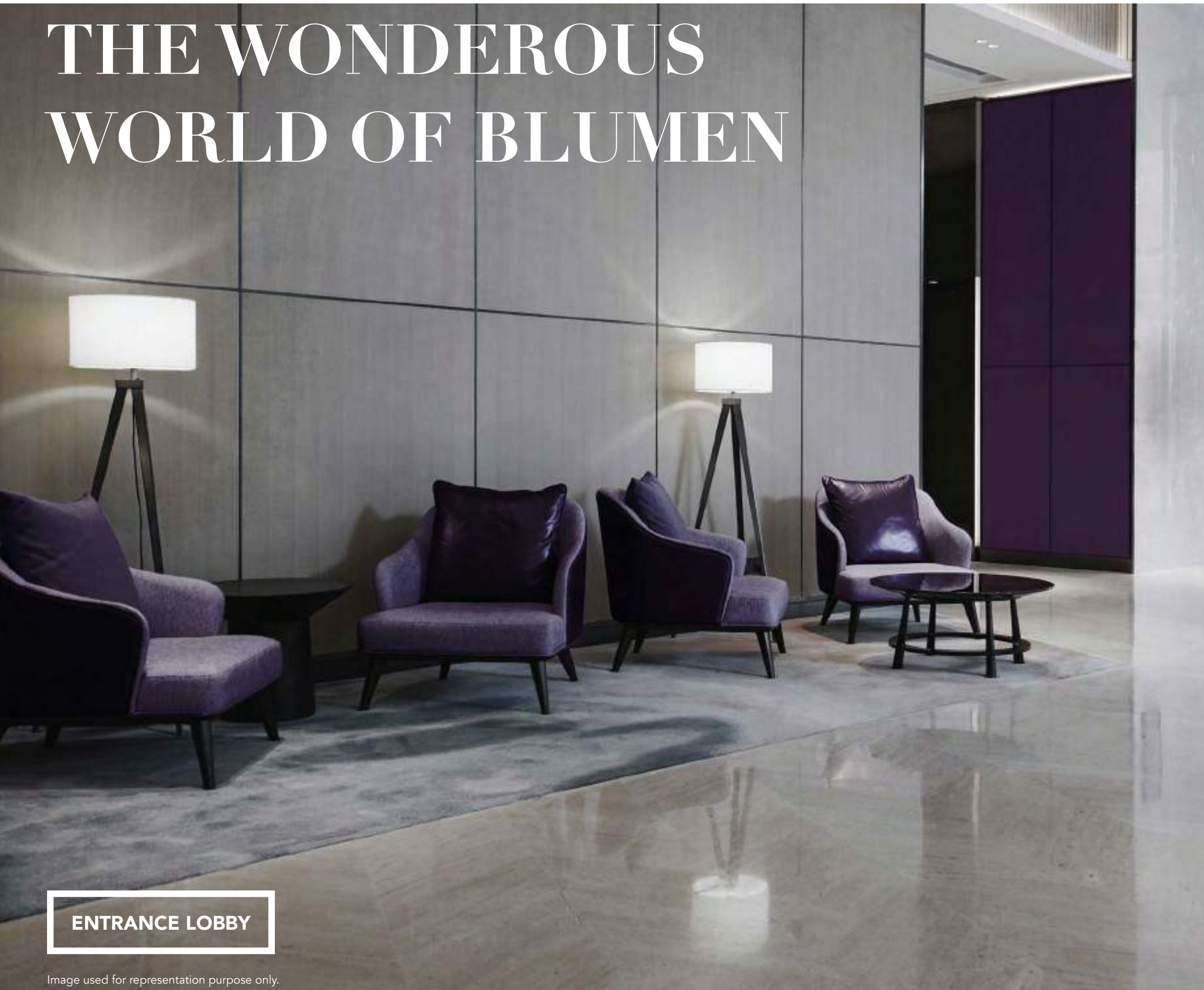


Image used for representation purpose only.



The intricate craftsmanship is a sight to behold. Minute attention is showered on the micro detailing. To create the ultimate masterpiece called Blumen, where time stands still. Because, God is in the details.

WELCOME TO THE WONDEROUS WORLD OF BLUMEN



ENTRANCE LOBBY

Image used for representation purpose only.

Inviting you to the elegant bouquet of 1, 2 & 3 BHK apartments. With an attractive option of "Jodi Flats", where you have the privilege of living life, king size!

Positioned to be the pinnacle of elite living, Blumen blooms in the epicentre of Mumbai's emerging hub-Vikhroli.

The ground floor frontage has well appointed commercial area for daily convenience stores under one roof.

The three commercial levels of office space with road facing frontages is ideal for small, medium enterprises to thrive in a popular location.

Three minutes from Vikhroli Railway Station, ongoing East-West Motor Bridge nearby and right off LBS Marg (Ongoing Metro), Blumen is the emerging landmark of style and substance for the upwardly mobile. A cut above the rest!

FEATURE & FACILITIES

1. WiFi Enabled Common Area
2. Well Designed Lift Lobbies & High Speed Elevators
3. 24 Hours Power back up for Common Areas
4. Premium Fittings and Fixtures in every Apartment
5. Designer Façade with LED Lighting
6. Designer Entrance Lobby with Concierge Desk & Lounge
7. Advanced Security with 24x7 CCTV Surveillance
8. Multilevel Mechanical Parking
9. Sewage Treatment Plant Facility
10. Rain Water Harvesting System
11. Fire Fighting Compliant Building



Image used for representation purpose only.

BEYOND LIVING SPACES

Open the door to spacious, living cum dining room, that's the ultimate in luxury. Check out from the floor to the ceiling and it will take your breath away. Best in class vitrified tiles that will make you dance. Enjoy the latest, superior paint finish and powder coated aluminium windows that will make your visitors go green with envy. Get pampered with energy saving LED light fittings. With settings to soothe your mind,

matching your myriad moods. Provisions for installing split air conditioners for you and your family to keep cool. Video door phone for quick and secure identity check. An IS 2202 specified solid Pinewood doors with unique veneer look lamination for adding value to your decor. Entertain your guest to a gourmet sit down meal. Evolve into the art of living in style. Life is good!



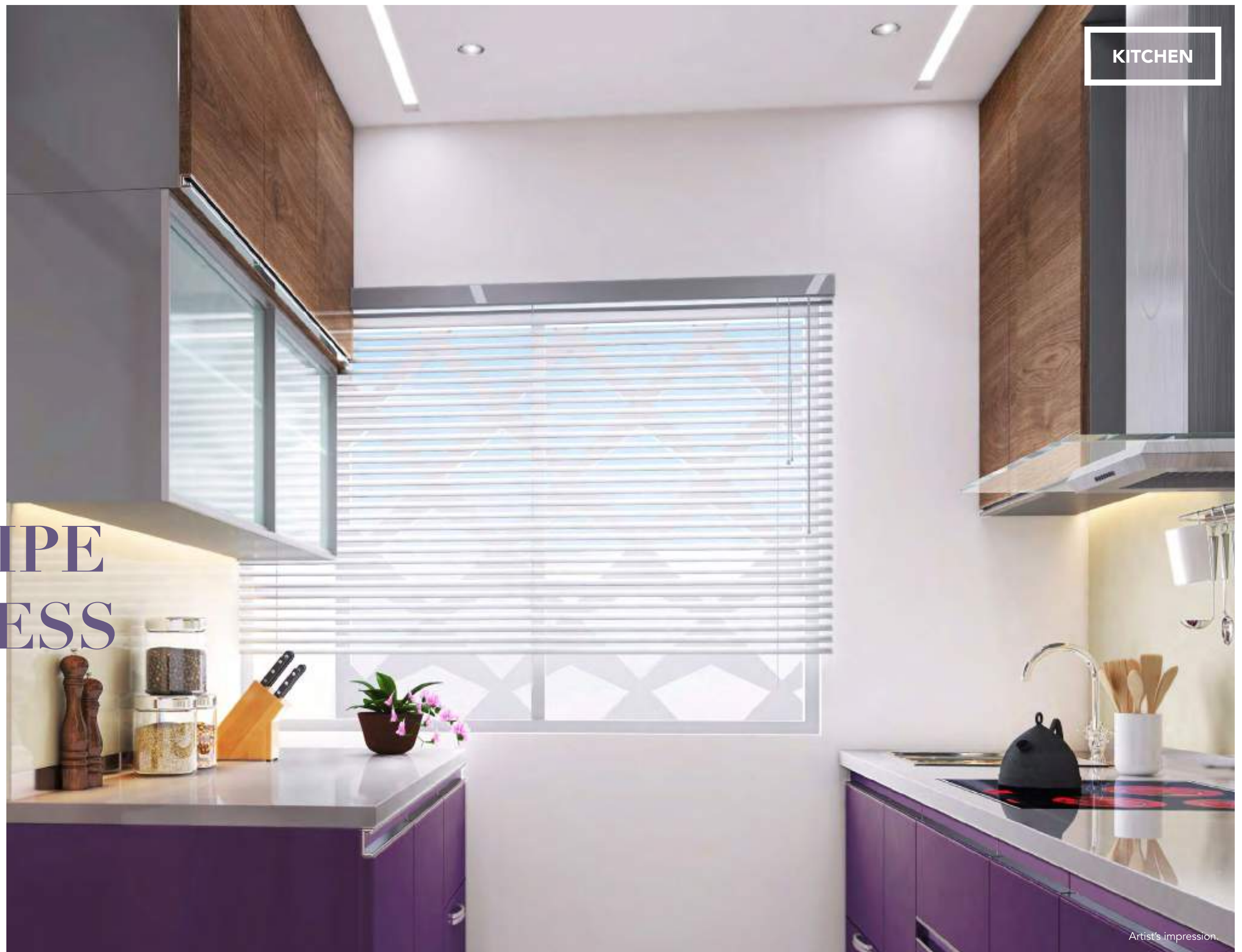
Image used for representation purpose only.

TO THE MANOR BORN

Chill out in your own private world. Reflect in your special personal space. Rejuvenate and recuperate in opulence and luxury. Reflect on the special moments as day transforms into night. Share in peace and harmony of heavenly bliss. Wake up to the challenges of another day. As the morning sun breaks through the French windows, awake or asleep, life is beautiful!

THE RECIPE OF SUCCESS

Fine dining starts here. Thrive on the granite platform with Nirali or equivalent sink. Dado ceramic tiles upto four and a half feet from the platform and with adequate provision for installing water purifier to safeguard health. Ideal set up for pipe gas connection and LPG. Just fit a modular kitchen, cooker, hood and chimney. What are you waiting for? Cook up a storm!



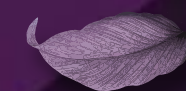
BATH ROOM



Artist's impression.

DEFINE YOUR OWN PERSONAL SPACE

Get ready to be pampered with the ultimate in bathroom comfort. Splendid doors and window frames in composite marble beckon you. Relish imported sanitary fittings from Jaquar or of equivalent make. Play with a whole new concept in shower console. Check yourself out in the mirrors. Anti-skid flooring tiles along with CP fittings from Jaquar or equivalent make, with Dado ceramic tiles upto full height. A drying rack for your clothes and a provision for washing machine. It can't get bigger and better than this. The only thing that's left is to polish off your singing.



EDEN

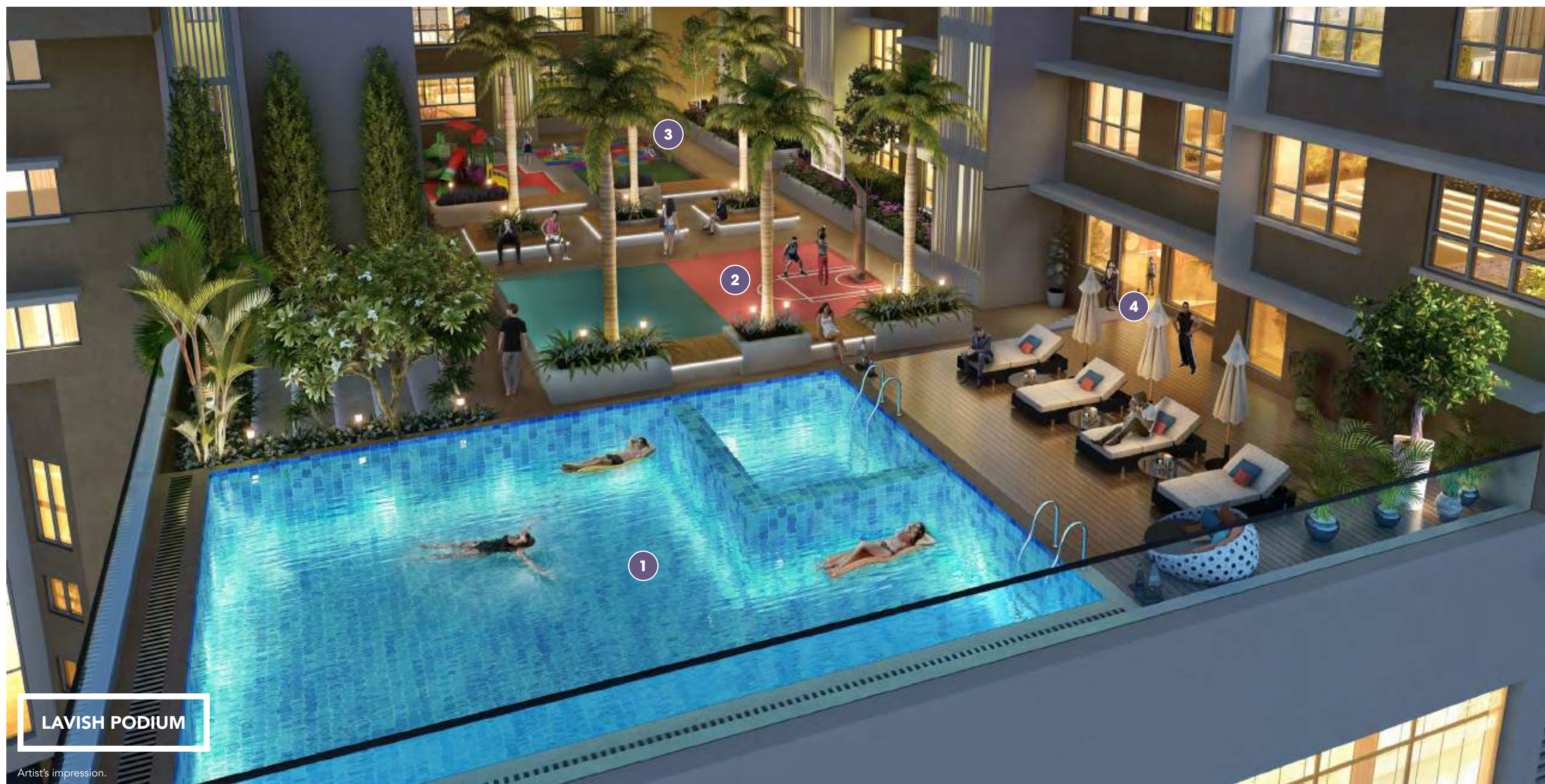


WHEN THIS WORLD IS NOT ENOUGH

This paradise called Eden is laid out on the 6500 sq.ft. podium. The ultimate for recreation, rejuvenation and wellness for the mortal mind and soul. Welcome the rays of the rising sun with a Surya Namaskar in the garden. Then you can hit the fitness centre for a thorough workout at the gym. Or play badminton or layup for a game of basketball. Dive into the refreshing pool after, to cool off. Or just melt away your tensions after a tiring day of work. The kids play area fun and frolic activities will keep your kids enjoying safely away but, under your eyes.

Jog away the late night blues and get ready to face another day. This vehicle free, podium garden is quite aptly named 'Eden' of Blumen.

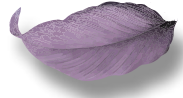
1. Separate pools for adults and kids, to splash along in excitement.
2. Multi-court which can be converted into Basketball or Badminton court.
3. A play area and lawn for your children to run around.
4. A 2500 sq.ft. Fitness centre with the latest equipment for a holistic workout session.



LAVISH PODIUM

Artist's impression.

UTOPIA



DISCOVER THE STAR SPECKLED GATEWAY TO BLISS

The ultimate in roof top extravaganza, curated for the heavenly body that walks the earth. Utopia spread accross 9000 sq.ft. area and spaced out under a canopy of stars, every inch heightens the experience of memories that thrive in their own time and space. Undoubtedly above and ahead, Utopia offers a beautiful Cabana, Sky Lounge with luxury sit outs, Skywalk & Acupressure Walkway, an equipped Gym Zone, terrace landscaping with designer flora, a cosy Library and even a compact Cricket Pitch. Thank your lucky stars!

1. Terrace landscaping to indulge people who love gardening.
2. A beautiful cabana overlooking the night sky.
3. A Well equipped gym for energetic workouts.
4. A lavish lounge area to relax and catch up with friends.
5. Stunning acupressure walkway to de-stress yourself.
6. Party deck that can host your rocking weekends.
7. A library to immerse yourself in.
8. Compact cricket pitch for future cricket champions of India.



MAGNIFICENT ROOF TOP

Artist's Impression.

A BOUQUET OF COMFORTS



Image used for representation purpose only.

A personification of luxury and sophistication, Blumen is an amalgamation of artistic wonders and practical prudence, making for an ideal home where beautiful lives thrive in brilliance. Sculpted in four glorious & magnificent wings, it is a heaven of imperious marvel.



WING A

COLOUR: VIOLET
SYMBOLISM: APPRECIATION & ROMANCE

Aster, which is a flower that has historically been known to make by-products ranging from medicinal to cosmetic. This prized bloom also does well in describing our first wing of this project, as Blumen towers will be a place that will make the life of residents easier and more convenient.



WING B

COLOUR: PINK
SYMBOLISM: ROYALTY AND ADMIRATION

Betony, is named after Beronice, a woman healed by Christ, this flower is one of the great 'all-heals' of medieval herbalists for both body and soul. Betony is commonly found in old country churchyards, where it was planted in the past for its medicinal value and to ward off evil.



WING C

COLOUR: WHITE
SYMBOLISM: INNOCENCE AND PURITY

Calla, short for Calla Lily, a name literally meaning 'Beauty', is widely used in many important ceremonies including bridal bouquets. Giving its name to yet another wing of the Blumen towers and symbolising the closeness that the project will have in the lives of its future homeowners.



WING D

COLOUR: ORANGE
SYMBOLISM: INNER STRENGTH AND DIGNITY

Dahlia, believed by many, represents diversity. During the Victorian era, these flowers were believed to be an indication of personal sentiments. They meant commitment, or an everlasting bond or union. The qualities of elegance and dignity are the foundation of our last wing and its residents.

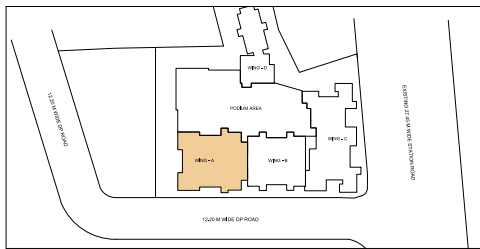
TYPICAL FLOOR PLAN



WING ASTER



2 BHK



KEY PLAN



Disclaimer: Floor plan measurements are approximate and are for illustrative purpose only. While we do not doubt the floor plan's accuracy, we make no guarantee, warranty or representation as to the accuracy and completeness of the floor plan. You or your advisors should conduct a careful, independent investigation of the property to determine to your satisfaction as to the suitability of the property for your space requirements.

TYPICAL FLOOR PLAN



WING BETONY



1 BHK



KEY PLAN



Disclaimer: Floor plan measurements are approximate and are for illustrative purpose only. While we do not doubt the floor plan's accuracy, we make no guarantee, warranty or representation as to the accuracy and completeness of the floor plan. You or your advisors should conduct a careful, independent investigation of the property to determine to your satisfaction as to the suitability of the property for your space requirements.

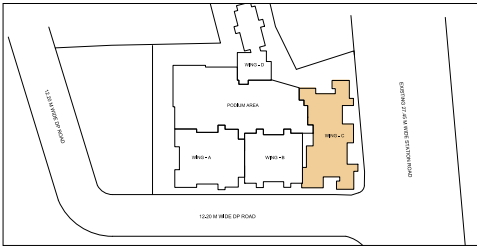
TYPICAL FLOOR PLAN



WING CALLA



2 BHK



KEY PLAN



Disclaimer: Floor plan measurements are approximate and are for illustrative purpose only. While we do not doubt the floor plan's accuracy, we make no guarantee, warranty or representation as to the accuracy and completeness of the floor plan. You or your advisors should conduct a careful, independent investigation of the property to determine to your satisfaction as to the suitability of the property for your space requirements.

REFUGE FLOOR PLAN



WING CALLA 7TH & 14TH FLOOR



1 & 2 BHK



KEY PLAN

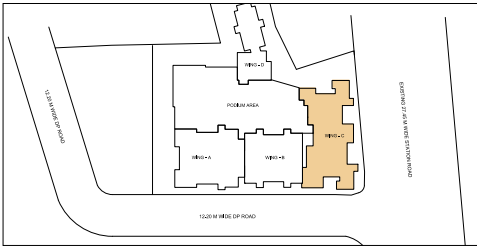


Disclaimer: Floor plan measurements are approximate and are for illustrative purpose only. While we do not doubt the floor plan's accuracy, we make no guarantee, warranty or representation as to the accuracy and completeness of the floor plan. You or your advisors should conduct a careful, independent investigation of the property to determine to your satisfaction as to the suitability of the property for your space requirements.

REFUGE FLOOR PLAN



WING CALLA 21ST FLOOR



KEY PLAN



Disclaimer: Floor plan measurements are approximate and are for illustrative purpose only. While we do not doubt the floor plan's accuracy, we make no guarantee, warranty or representation as to the accuracy and completeness of the floor plan. You or your advisors should conduct a careful, independent investigation of the property to determine to your satisfaction as to the suitability of the property for your space requirements.

TYPICAL FLOOR PLAN



WING DAHLIA



KEY PLAN



Disclaimer: Floor plan measurements are approximate and are for illustrative purpose only. While we do not doubt the floor plan's accuracy, we make no guarantee, warranty or representation as to the accuracy and completeness of the floor plan. You or your advisors should conduct a careful, independent investigation of the property to determine to your satisfaction as to the suitability of the property for your space requirements.



VIKHROLI BECKONS



PROPOSED & APPROVED PROJECTS BY GOVERNMENT

- Metro - 6 between Jogeshwari to Kanjurmarg via Vikhroli
- Metro - 4 spanning Wadala to Thane via Vikhroli - Kanjurmarg
- Metro -1 which is close by connects Ghatkopar to Versova

CONNECTIVITY & CONVENIENCE

- St. Joseph Church & High School 2 min walk
- Derasar (Jain Temple) 3 min walk
- Vikhroli Railway Station 3 min walk
- LBS Marg 3 min walk
- Samarth Hospital 5 min walk
- R-City Mall 8 min drive
- JVLR 15 min drive



Map not to scale.

TRANSFORMING THE SKYLINES OF MUMBAI



**2 & 4 BHK
APARTMENTS**



MahaRERA Registration No.
P51900017691

Dadar (W)



**2 & 4 BHK
APARTMENTS**



MahaRERA Registration No.
P51900011117

Matunga (E)



**2, 3 & 4 BHK
SPACIOUS APARTMENTS**



MahaRERA Registration No.
P51800011423

Khar (W)



**2, 3 & 4 BHK
LUXURIOUS APARTMENTS**



MahaRERA Registration No.
P51800000204

Borivali (W)



**1 & 2.5 BHK
BUDGETED APARTMENTS**



MahaRERA Registration No.
P51800008691

Borivali (E)



**1 & 2 BHK
APARTMENTS**



MahaRERA Registration No.
P51800008441

Borivali (E)

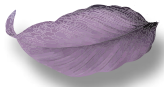


A Project by:



Site Address: Blumen, Station Road, Village Hariyali, Vikhroli (W). Mumbai-400083.

+91 92098 99000 www.blumen.co.in



MahaRERA Registration No. # P51800013365 | Maharera.mahaonline.gov.in

A Project Approved by:



THIS PROJECT IS APPROVED AND FUNDED BY ADITYA BIRLA HOUSING FINANCE LTD.

Disclaimer: The specification features, images and other details herein are only indicative. Furniture, Fixtures, Fittings are not part of the project, those images used here are just for representative purpose. The promoters/developer reserve the right to change any or all of these specifications, features, images or other details in the interest of the continuing improvement and development without prior intimation or obligation. This document does not constitute any offer and/or contract of any nature.